

# TECHNICAL BULLETIN

## » 875 SERIES

**SUBJECT:** Inside-Pipe Cleanout

**BULLETIN NO:** DRN-2306

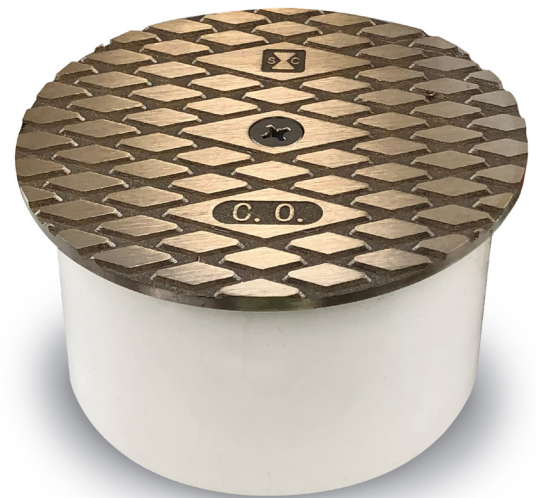
**DATE:** June 2023

**PAGE:** 1 of 1

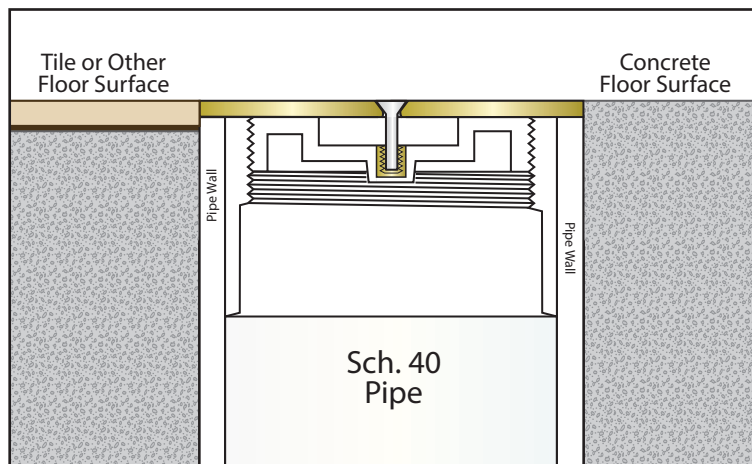
### Installation of Inside-Pipe Cleanout in Residential Garages

When installed properly<sup>1</sup>, and in all other applicable ways, compliant with local plumbing and building codes, the Sioux Chief 875 Series inside-pipe cleanout with nickel-bronze cover<sup>2</sup> is approved for installation in residential/single-family garage floors.

Wherever possible, cleanouts should be located out of the path of vehicle traffic, and/or parked wheel loads. For loads heavier than pedestrian traffic, the pipe should be cut such that it supports the outer rim of the nickel-bronze cleanout cover.



### General Installation



Stub up with Sch. 40 PVC pipe. Finish floor around pipe. Using inside pipe cutter, cut pipe below<sup>3</sup> finished floor surface. Prime and solvent weld inside of pipe<sup>4</sup> using appropriate solvent cement, according to manufacturer's instruction. Push into pipe until cover is flush with finish floor. Remove cover and plug. Apply lubricating thread sealant approved for use with plastic to plug threads. Replace plug and tighten into body. Replace cover.

<sup>1</sup> See general installation, above.

<sup>2</sup> Item numbers: 875-83AN, 875-83PN, 875-84AN, 875-84PN, 875-86PN

<sup>3</sup> For pedestrian traffic, pipe can be cut 3/16" - 3/4" below finish floor surface. For heavier loads, the pipe should be cut such that it supports the outer rim of the nickel-bronze cleanout cover

<sup>4</sup> The inside diameter of pipe can vary significantly – cleanouts are designed to fit inside most, but may not fit all Sch. 40 pipe.

The information contained herein is believed to be reliable, but is subject to change without notice. Before use or installation, the user shall determine the suitability of the information for the intended purpose, and shall assume all risk and liability in connection therewith. With the exception of the information given above, use of any/all Sioux Chief product shall be in accordance with local plumbing codes, common practices, published installation instructions and legal requirements.